

## Using Cmds32 to make 'screwless' calcs permanent

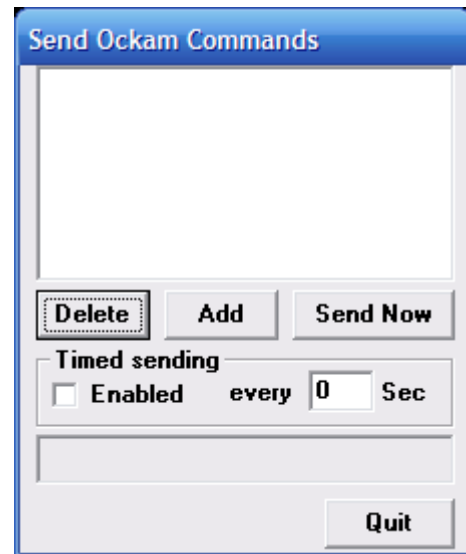
The Ockam system has only 7 screw-type calibrations. The advantage of them is that they provide a bullet-proof backup for the important instrument calibrations. So, if your wind direction suddenly goes in the head, you can always do a master reset and get things back in order. Provided you set them correctly, of course.

That leaves about 71 other settings (30 options, 16 soft calibrations and 32 averages) without a way to make them invulnerable.

OckamSoft 4 has a little applet that makes it easy to make any setting permanent. It is located in your OckamSoft 4 directory (C:\Program Files\OckamSoft 4\Goodies) and is called Cmds32.exe. If it's not there, download it from the web (<http://www.ockam.com/os4/Goodies1.zip>).

### Placing commands into Cmds32

1. Run Cmds32.
2. Press Add.
3. Enter the desired command. In this example, we're going to enter a lubber offset (Option 17).
4. Press OK.
5. When the list is complete, press 'Send Now'.



## Automatically sending your command list

You can set Cmds32 to automatically send your command list at regular intervals, or send them whenever you start your laptop by including Cmds32 in the list of programs to be started with OS4. To do the latter;

1. Start OS4Start.exe. This is the application that starts all the OS4 applications at once.
2. Under Other programs, press Add.
3. Browse to Cmds32.exe and add it to the list.
4. Now, whenever you start OS4, Cmds32 will also start. Then press 'Send' to put up your command list.

