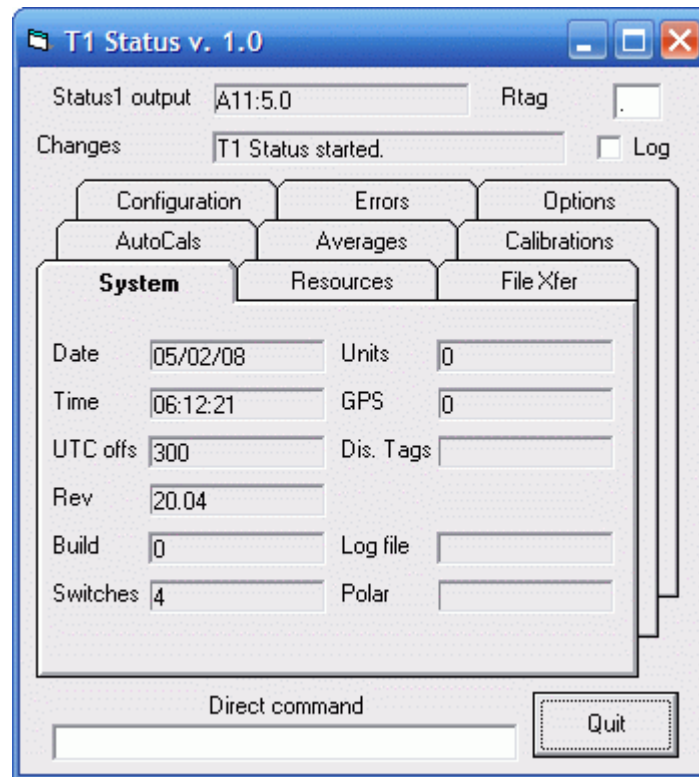


T1 Status Applet (T1Status)



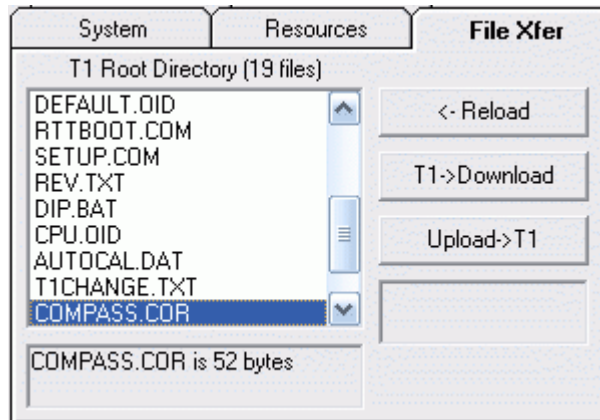
This applet monitors and displays the several hundred values of the T1 'Status 1' output for review by the responsible instrument guy. There are 8 tabs covering the various classes of data, and 1 tab for file transfer.

It takes up to 3 minutes for all items to be scanned in.

Additional controls

- | | |
|----------------|---|
| Direct command | Enter any system command in this window. The command is sent when you press the Enter key. |
| Log checkbox | When checked, any detected changes in the status values will be logged to file 'T1changes.txt'. New data is appended. |
| AutoCal | AutoCal tables can be enabled and disabled. When enabled, the current value is shown. |
| Rtag | File transfer and AutoCal protocols require a two-way conversation with the T1. The Rtag textbox should contain an unused tag for the protocol to use. The default is period. |

File transfer



Although we recommend transferring files directly to the compact flash card, T1Status can transfer small non-vital files such as sensor correction tables or AutoCal files.

To upload a file (PC->T1):

1. Press the 'Upload->T1' button.
2. Locate the desired file in the Open dialog box. The maximum file size is 32K bytes, but transfer is only 10's of bytes per second, so a 32K file would take an hour.
3. Change the name if necessary to conform to DOS file specs (8.3 format). Files on the T1 are all upper case.
4. The T1 does not automatically use the downloaded file. To start using it, reboot the T1.

To download a file:

1. Press the '<- Reload' button to refresh the file list.
2. Select a file from the list. The size is shown below.
3. Press the 'T1 -> Download' button.
4. In the Save As dialog, find a destination and possibly rename the file. Press Save.